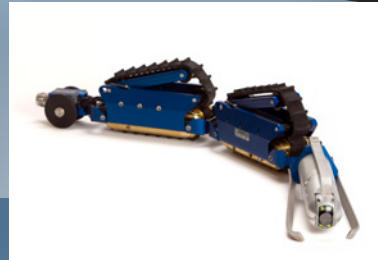




Versatrax 100™

The Versatrax 100™ is a precise, portable crawler system for operation in pipes as small as 4in / 100mm. The vehicle includes a high quality pan and tilt color camera. This easy-to-use system penetrates up to 600ft / 183m of pipe and overcomes obstacles and offset joints. The whole system fits in a small vehicle and can be checked in as airline luggage. It is adaptable for round pipe or flat surfaces in parallel and in-line configurations. The unit is waterproof to 100ft / 30m and weighs just 20lb / 9kg.

For more information on advanced remote inspection systems contact Inuktun today.



SPECIFICATIONS

VEHICLE

Variable Speed	32ft / 10m per minute
Transporter	Two brass Microtracs™
Tether Cable	600ft / 183m; multi-conductor; abrasion resistant Rilsan®, 360lb strength member
Weight	20lb / 9kg with brass Microtracs™
Pipe Diameter	4in / 100mm in-line chassis, 6in / 152mm and greater parallel chassis
Chassis Material	Brass or anodized aluminum
Auxiliary Lights	2x 20W Quartz / halogen Variable intensity

CAMERA

Type	Spectrum 45™ pan and tilt camera
Material	Aluminum or 316 stainless steel
Type	Color ¼in CMOS
Sensitivity	< 1lux
Resolution	420 TV lines (vertical)
Focus	Manual (remote)
Iris	Auto
Lights	6x High intensity LEDs
Weight	1.1lb / 0.5kg

Options

Rear-facing Crystal Cam®

OPERATING ENVIRONMENT

Temperature	0°–50°C (32°–122°F)
Depth Rating	100ft / 30m

CONTROL SYSTEM

Power	Voltage (Nom): 115 / 230VAC 550W Suggested Generator / Inverter: .6Kw Pelican® case or rack mount
Enclosure Control	Membrane panel with variable joystick, keyboard control, Versatrax controller (directly compatible with the Versatrax 150™ and Spectrum 90™), cruise control
Tether Reel	Manual crank
Video Overlay	Date and time, tether distance, menu system for options, track power, keyboard entry and text comment
Options	LCD monitors (sunlight readable option) and DVR in Pelican® case lid; aluminum chassis, tracks, and magnetic attachment for vertical and inverted operation on ferrous surfaces

APPLICATIONS

- Sewer and storm drains
- Air ducts
- Steam headers
- Tank and pressure vessels
- Oil and gas refineries and pipelines
- Pulp and paper
- Vertical inspection

BENEFITS

- Adjustable for a range of pipe diameters
- Easily configurable for round pipe or flat surface operation
- Waterproof to 100ft / 30m
- Can penetrate up to 600ft / 183m
- Low maintenance
- Steerable in the parallel configuration

MODULAR MOBILE ROBOTIC
CRAWLER VEHICLES

INDUSTRIAL WATERPROOF
CAMERA SYSTEMS

... see it for yourself

INUKTUN

CRAFTSMANSHIP IN HIGH TECHNOLOGY

CONTACT US

Phone Toll Free in North America
1.877.INUKTUN | 1.877.468.5886



INUKTUN US, LLC

103 Rio Rancho Drive NE, Suite A-6,
Rio Rancho, New Mexico, 87124, USA
Phone: 505.994.0702 | Fax: 505.994.0726
www.inuktun.us | sales@inuktun.us



HANGZHOU INUKTUN ROBOTS LTD.

Building A, No. 478,
WenSan Road Huaxing Time Square
Hangzhou, Zhejiang Province, China
www.inuktun.cn | sales@inuktun.cn



INUKTUN SERVICES LTD.

2569 Kenworth Road, Suite C,
Nanaimo, BC, Canada V9T 3M4
Phone: 250.729.8080 | Fax: 250.729.8077
www.inuktun.com | sales@inuktun.com



INUKTUN EUROPE LTD.

Unit 3 Crombie House, Grandholm Village,
Bridge of Don, Aberdeen, Scotland AB22 8BD, UK
Phone: +44.1224.701444 | Fax: +44.1224.853860
www.inuktun-europe.com | sales@inuktun-europe.com



INUKTUN ASIA PTE LTD.

16 Boon Lay Way, #01-43 TradeHub21,
Singapore 609965
Phone: +65.9383.6270 | Fax: +65.6795.4222
www.inuktun-asia.com | sales@inuktun-asia.com

ABOUT INUKTUN

Inuktun Services Ltd. (ISL) was founded in 1989 to design and manufacture Remotely Operated Vehicles (ROVs) and modular robotic systems for use in confined spaces and hazardous environments. Since then, the company has earned a reputation as the expert in remote controlled robotic inspection and instrumentation transport systems. Reliability, efficiency, quality, and cost-effectiveness are emphasized in the design of all equipment produced by ISL.

The company employs a multi-disciplinary team of engineers, scientists, administrative and production personnel at its facility in Nanaimo, British Columbia, Canada.

In addition to producing and selling a complete line of standard equipment for a variety of remote robotic inspection applications, the company also offers a complete range of engineering services from conceptual design through to project completion.

To ensure and maintain the company's high standard of quality systems assembly, integration and testing are accomplished using in-house electronic and machine assembly staff. In addition, ISL regularly develops partnerships with other businesses and consultants to provide specialty engineering in accordance with design criteria. As a result, ISL is able to provide customers with innovative, high-quality equipment that is functionally reliable, easily operated, and cost-effective.

MODULAR MOBILE ROBOTIC
CRAWLER VEHICLES

INDUSTRIAL WATERPROOF
CAMERA SYSTEMS